



CANOPIES

Safety and shelter are critical aspects to living life on the road. In more ways than one, a good canopy should combine these elements in a way that is not only easy to use, but also adaptable to change.

Back in the 1990s, when we started building the first-ever aluminium adventure canopies, we knew from our own travel experience that three factors are vital to the success of vehicle-based travel and/or overland equipment. These are weight, strength and versatility.

The trick is to find a solution that offers the best combination of all three. Until engineers start building passenger planes out of fibreglass or stainless steel, we're going to stick with the material that offers the best possible (and most economical) strength-to-weight ratio: Aluminium.

But, aside from the obvious strength / weight benefits, we favour aluminium for its unsurpassed corrosion-resistance, its UV stability, its repair-ability, and its flexibility – essential qualities in any off-road environment.

CHOOSE YOUR MODEL:



Adventure Canopy

The Canopy is 900mm wide allowing for fitment of a gas bottle holder and / or jerrycan holder

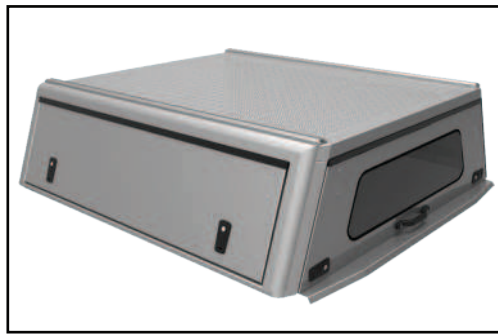


Explorer Canopy

Full width rear door, allows full access to load bay



Single Cab



Double Cab

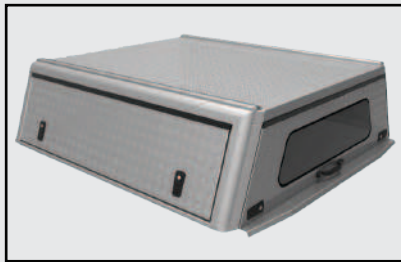


Extra Cab

TECHNICAL FEATURES

FINISH

Powder - Coated **Black & Silver**



Tread - Available in black & silver



Smooth - Available in black & silver

SLEEK NEW DESIGN Our canopies are CAD designed to ensure consistency & quality.

FRAME Tig welded aluminium extrusions.

PANELS Aluminium sheet CNC laser-cut and bent.

DOORS Centre flex, water proof hinges - prevents rain water dripping in when door is open. - Full length side doors for full access on DC Canopies.

LOCKS Reliable, tamper-proof and keyed alike.

GLASS Automotive safety glass, E-marked.

WEIGHT Approx. 57 kg for DC Canopy one of the lightest canopies of its kind, two people can easily lift it onto the load bin.

FITMENT No-drill fitment on most modern vehicles. Fitment brackets fasten to manufacturer's load points on the load bin. Recommended fitment time 20 - 30 minutes by one person.

GAS STRUTS High quality units made in Germany.

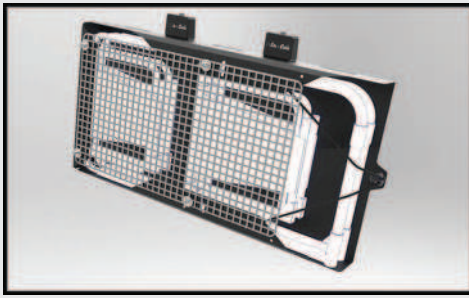
REINFORCED ROOF One can load 150kg directly on to roof. Mounting Rail fitted on canopy roof as standard. Can be used with M8 cup square bolts, tie down rings etc.

READY TO FIT The canopy is delivered ready to fit to the vehicle, no need to assemble.

WATERPROOF Canopy is waterproof.

PACKAGING The canopy is packed in a reinforced box that ensures safe delivery all over the world.

All bolt-on to canopy with no drilling fitment kits.



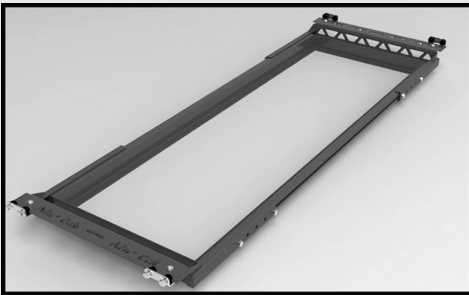
2 Chair Carrier



Side Prep Table



Push Button Lock Cover



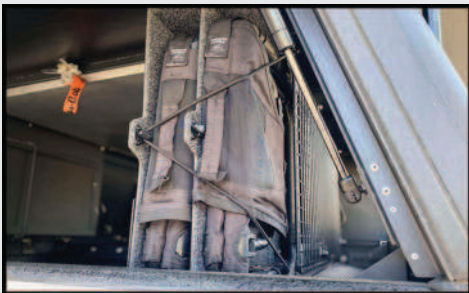
Ammo Box Slide



Canopy Table Bracket



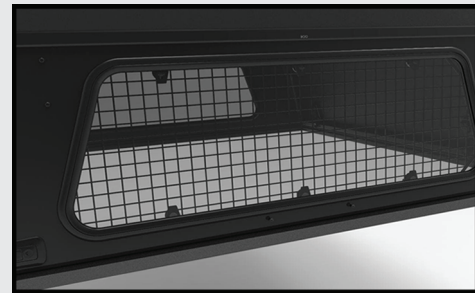
Alu - Table



4 Chair Carrier



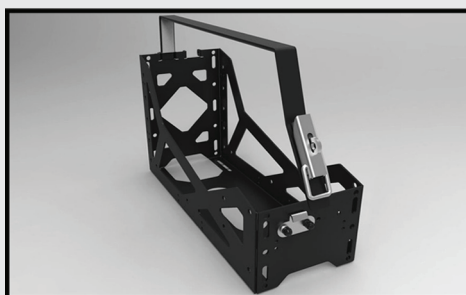
Canopy Cupboards



Security Window Grid



Kitchen Kitting for Cupboard



Jerry Can Holder



Gas Bottle Holder



Roof Rack Tray



Roof Rack Tray with Table Bracket



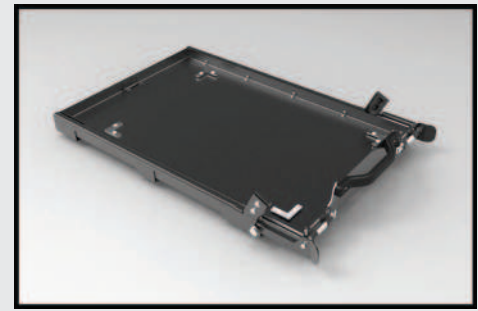
Load Bars



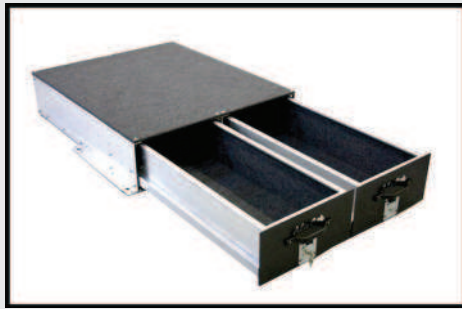
Shower Cube



270° Shadow Awning



Tilting Fridge Slide - FS1, FS2 & FS3



Drawer System



Recovery Kitting for Cupboard

FORD RANGER T6Available in **Double**, **Extra** and **Single** Cab**CHEVY COLORADO 2017+**Available in **Double** Cab**ISUZU KB 2013+**Available in **Double** and **Extra** Cab**ISUZU 2020**Available in **Double** and **Extra** Cab**JEEP GLADIATOR**Available in **Double** Cab**MERCEDES BENZ X CLASS**Available in **Double** Cab**MITSUBISHI TRITON 2016+**Available in **Double** and **Extra** Cab**NISSAN NAVARA D40**Available in **Double** and **Extra** Cab**NISSAN NAVARA NP300**Available in **Double** (and **EU DC**) and **Extra** Cab (and **EU XC**)**HILUX VIGO 2005+**Available in **Double** and **Extra** Cab**HILUX REVO 2016+**Available in **Double**, **Extra** and **Single** Cab**LAND CRUISER 79**Available in **Double** and **Single** Cab**VW AMAROK**Available in **Double** Cab**TOYOTA TACOMA GEN2**Available in **Long** Bed and **Short** Bed (2005+)**TOYOTA TACOMA GEN3 2016+**Available in **Long** Bed and **Short** Bed